

ULTIMA[®] X5000



WE KNOW YOU'RE TIRED OF...



"NEEDING TO DISCONNECT
POWER BEFORE CHANGING A SENSOR"

"REMEMBERING HOW TO
CALIBRATE THIS THING"

"HAVING TO PULL SO MUCH WIRE AT
EVERY GAS DETECTOR INSTALLATION..."

"WONDERING IF THE GAS DETECTOR
IS WORKING"



YOU HAVEN'T BEEN ABLE TO
DO ANYTHING ABOUT IT
...UNTIL NOW

"LOSING MY MAGNET...
I HAVE BIGGER THINGS
TO WORRY ABOUT"



ALL NEW DESIGN



BLUETOOTH
CONNECTION STATUS



ACTIVE
OPERATION
INDICATOR

GAS READING
GAUGE AND
PROGRESS BAR

BRIGHT
STATUS LEDs

INSTRUMENT STATUS INDICATORS



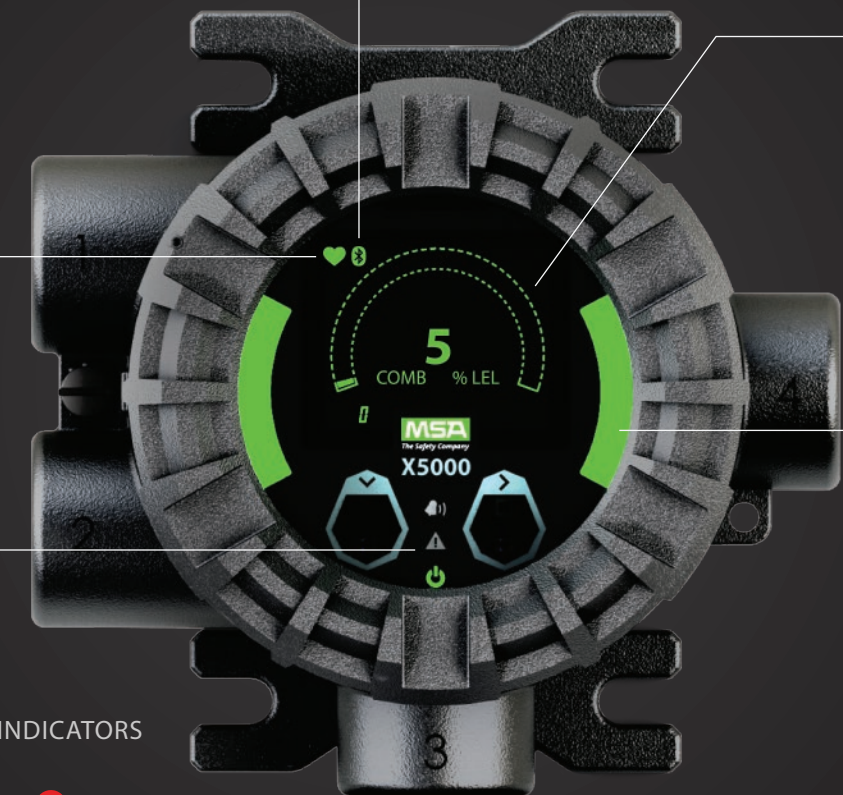
Power



Fault



Alarm



STAY CONNECTED. WORK SMARTER.

- Bluetooth enabled
- Check status and get alerts up to 75 ft away
- Modify settings/setpoints/alarms
- Initiate calibration and view progress
- Reduce setup time by at least 50%



Do MORE WITH LESS

1 Transmitter = 2X Sensing Power



2" INTEGRAL
PIPE MOUNT
BRACKET

SIMPLE RETROFITS

Identical footprint and wiring to
the ULTIMA® X Series

3/4" NPT OR
M25 THREADS

DUAL SENSORS AND
ANALOG OUTPUTS

TOUCH
INTERFACE
FOR TOOL FREE
OPERATION

Combustible, Toxic
or Oxygen
Digital Sensors

TAG ATTACHMENT

MULTI-LINGUAL
TEXT MENU OPTIONS

(XIR Plus Sensor shown)
Dual sensing capability for
any combination of
sensors

SafeSwap®

Safely and quickly replace
sensors without turning off the
instrument

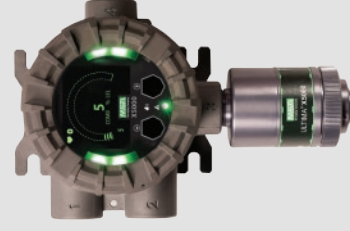
POWERED BY
XCell
SENSORS
WITH
TruCal
PLATFORM

(ACTUAL SIZE)

MATERIAL OPTIONS



STAINLESS STEEL
Ultra Corrosion
Resistant
8.8 lbs



ANODIZED ALUMINUM
Durable & Lightweight
3.5 lbs

NEW ADVANCED SENSOR TECHNOLOGY

IT MAKES SENSE...NO EXCEPTIONS



Up to **1.5 YEARS** between calibrations!

XCell[®]
SENSORS

MSA Industry Avg

Longer Sensor Life

O₂ 5 yrs
1 yr

Toxic (CO/H₂S) 5 yrs
2-3 yrs

Longer Warranties

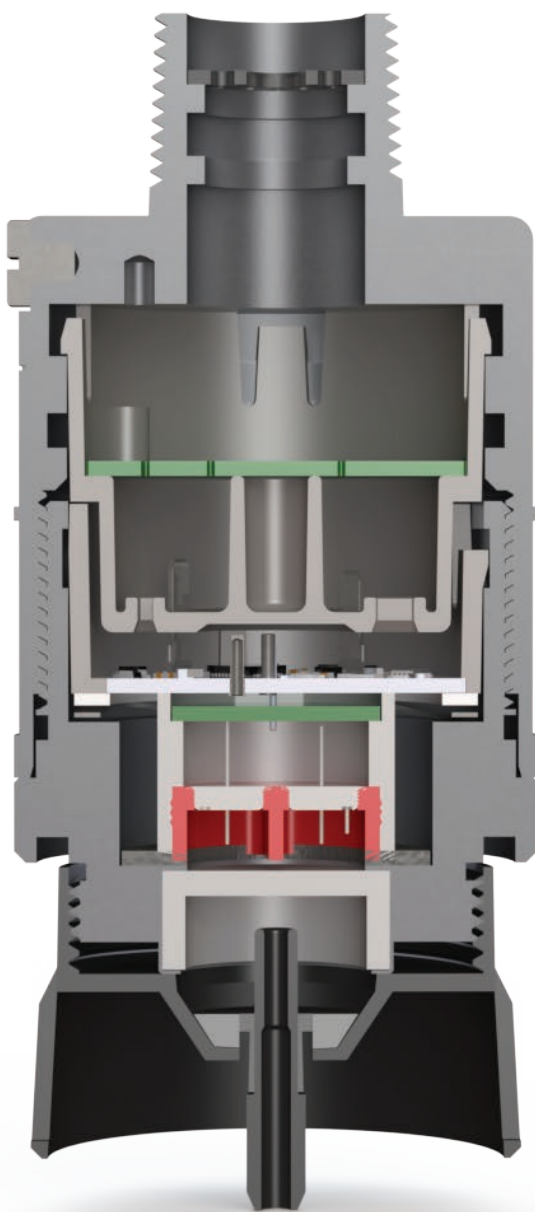
3 yrs
2 yr

Higher Temperature

+60C
+50C

Better Resolution for H₂S

10x (0.1ppm)
1x (1ppm)

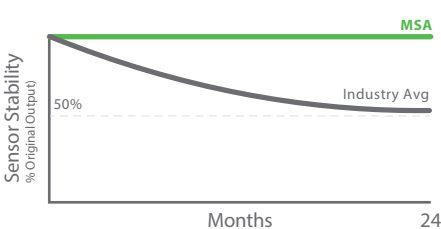


TruCal[®]
TECHNOLOGY

*only CO & H₂S

MSA Industry Avg

Better Stability (Lower Drift)



Longer Calibration Cycles

18 months
4.5 months

Worry-Free Operation



Automatically self-checks 4x/day



EXPECTED LIFE



WARRANTY



PATENTS

We're going to help you save

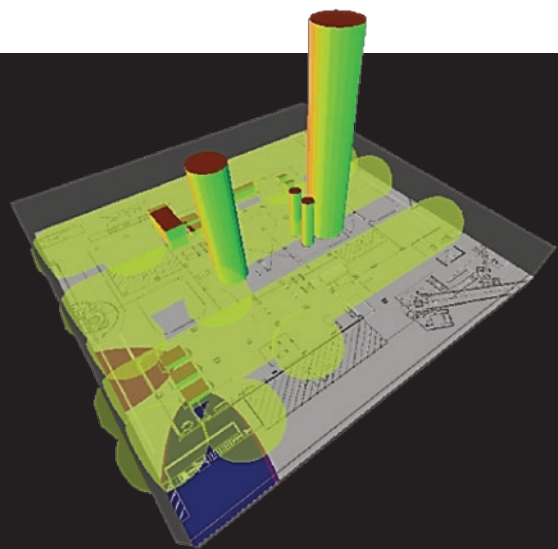
Installation	30%	~\$7,000
Annual Maintenance	50%	~\$1,500
Over the life of the product	75%	~\$15k

* Based on 10 sensors and 2 sensors/transmitter

Questions about sensor placement?

MSA's new gas and flame mapping service combines 150 years of gas detection experience with 3D technology to help you maximize the effectiveness of every sensor.

Check out the link for more information:
<https://us.msasafety.com/gas-mapping>



* Data may vary for different gases and configurations

Trust us...We've been saving lives for over 100 years



X5000 Gas Monitor Specifications and Features

Specifications	Description	Features
GAS TYPES	Catalytic bead, XCell Sensors	Combustible, toxics and oxygen
	Infrared (XIR)	Combustibles and carbon dioxide
TEMPERATURE RANGE	Catalytic bead, XCell Sensors	-40°C to 60°C (-40°F to +140°F)
	Infrared	-40°C to 60°C (-40°F to +140°F) - may differ by gas
DRIFT	Zero drift	<5%/year, typical <2%/year, typical (IR)
	Span drift	<10%/year, typical
ACCURACY	Repeatability	+/- 5% full scale, typical XIR Plus: +/- 2% full scale
	Linearity	+/- 5% full scale, typical XIR Plus: +/- 2% full scale
RESPONSE TIMES (T90)	Combustible	< 3 seconds (Infrared), <30 seconds (Catalytic bead)
	Oxygen	< 10 seconds
	H ₂ S and CO	< 15 seconds
HUMIDITY	Catalytic bead, XCell Sensors	15% - 95% RH, non-condensing
	Infrared	0% - 95% RH, non-condensing
SENSOR LIFE	XCell Sensors	5 years typical
	Catalytic bead	5 years typical
	Infrared	10 years typical
POWER	All sensors	10-30 VDC, 3 wire, < 5W nominal, <3W ECO-mode
	XCell Sensors	10-30 VDC, 2 wire, <0.5W *Coming Soon
SIGNAL OUTPUT	Toxic & oxygen	4-20 mA current sink (2 wire only) *Coming Soon
	All sensors	4-20 mA current source
	All sensors	HART output
	All sensors	Bluetooth
	All sensors	Wireless HART, Modbus (optional)
RELAYS		(2) Alarm & (1) Fault, 5A @ 220 VAC; 5A @30VDC
HOUSING ENTRIES		(4) 3/4" NPT or M25
PHYSICAL		316 SS, 8.8 lbs (4 kg) ADC12 Aluminum, 3.5 lbs (1.6 kg)
APPROVAL RATINGS	USA/Canada cFMus, CSA Class I Div 1 Groups A-D, T4, Type 4X, IP66 Class II Div 1 Groups E-G; Class III Class I Zone 1 Aex db IIC T5 Gb (NA Zones) Class II Zone 21 Aex tb IIC T100C Db (NA Zones) Ex db IIC T5 Gb (Global Zones) Ex tb IIC T100C Db (Global Zones)	Europe ANSI/ISA/ATEX/IEC – 60079-2-1 (12.13.01) C22.2 no. 152 SIL Certification SIL 2 @ HFT=0 (oxygen, catalytic combustible, and IR) SIL 1 @ HFT=0; SIL2 @ HFT = 1 (toxic)

Note: This bulletin contains only a general description of the products shown. While uses and performance capabilities are described, under no circumstances shall the products be used by untrained or unqualified individuals and not until the product instructions including any warnings or cautions provided have been thoroughly read and understood. Only they contain the complete and detailed information concerning proper use and care of these products.

MSA - The Safety Company
1000 Cranberry Woods Drive
Cranberry Township, PA 16066 USA
Phone 724-776-8600
www.MSAafety.com

U.S. Customer Service Center
Phone 1-800-MSA-2222
Fax 1-800-967-0398

MSA Canada
Phone 1-800-MSA-2222
Fax 1-800-967-0398

MSA Mexico
Phone 01 800 672 7222
Fax 52-44 2227 3943

SYSTAG
36-38 Stanley St
Capalaba Qld 4157

Ph: 07 3245 2098
Fx: 07 3245 2302
service@systag.com.au
www.systag.com.au